

Research News

Vol. 4 No 3

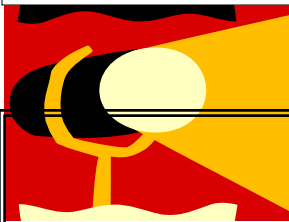


The march of time continues and so does the research activity on our campus as evidenced by the long list of awards received in the just completed third quarter of fiscal year 2010.

Our new investigators continue to pursue external funding in support of their research activities and this issue highlights just two of those faculty. The National Institutes of Health indicates that the average age for first time funding was 42.6 in FY07 so these faculty beat the odds.

It's a small world after all. Add a global perspective to your National Science Foundation proposals.

Compliance just will not go away. A recent National Science Foundation proposal was not reviewed because some required information was missing. No requirement is inconsequential and even the wrong font size can jeopardize a proposal. Timely progress reports and final reports are to be taken seriously.



Spotlight on...

An improbable but true true story

At first it was difficult to understand the chatter but eventually I was able to recognize the name **Claus Holzapel**, Assistant Professor in the FASN-Biological Sciences Department. The birds (and I think I recognized Smokey among them) were chattering as they told me how excited they were that their friend Claus had received his first direct substantial federal funding.

Claus was recently awarded just over 1.6 million dollars over 4 years by the US Army Corps of Engineers. The funding supports his research in the Mojave and Sonoran deserts to determine how non native plants impact native species and also contribute to frequent fires.

In collaboration with his colleague Kirk Moloney at Iowa State University, the pair will observe patterns and develop models to “explore the causes and consequences, at a landscape scale, of increased fire frequency and intensity under projected scenarios of climate change and will further examine the efficacy of different management strategies.”

(Claus is the campus chief birdwatcher and is friend to all of the feathered visitors to the Newark campus, including Smokey)



AND THEY'RE OFF ...



Elizabeth Tricomi and Michael Shifflett

in FASN-Psychology Department have been very successful in obtaining National Institutes of Health research support very early in their careers. Individually and together they have been funded with economic stimulus dollars.

Elizabeth recently received funding of \$431,678 in the first year of a three year project. Their research seeks to understand the neural basis leading individuals with substance abuse disorders to continue to use illicit drugs despite the negative consequences.

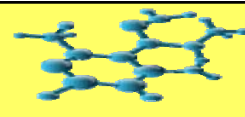
Elizabeth attributed their early successes to the training received as graduate students.

Let the public service be a proud and lively career

- *President John F. Kennedy*

These could very well be words that spur the activities of the Rutgers School of Public Affairs and Administration (SPAA).

One of the programs in which SPAA is engaged is the Public Performance Measurement and Reporting Network (PPMRN) led by **Marc Holzer**, Dean, and **Michelle Collins**. The program has been funded for several years by the Alfred P. Sloan Foundation with the most recent funding in the amount of \$450,306. The network is a free resource that benefits practitioners, academics, researchers, nonprofit and government professionals, citizens and other stakeholders to share their ideas and expertise to better serve all citizens.



ARRA Report●●●by the numbers

The Funding Response to Date



NIH in house proposals	-	2
NSF in house proposals	-	3
NIH Administrative supplement	-	1
NIH Student Summer Research Experience	-	1
Health Resources and Services Administration (HRSA)	-	1
NIH Subcontract	-	1
NIH ARRA specific proposal	-	1

CHECK IT OUT SPIN HAS DEPARTED COS IS IN

The university replaced the Sponsored Programs Information Network System (SPIN) with Community of Science to better assist faculty in their search for funding opportunities.

See for yourself: <http://www.cos.com/>

Also : <http://www.grantadvisor.com/tgaplus/>

2009 WAS A VERY GOOD YEAR



http://orsp.rutgers.edu/downloads/AnnualRpt/FY09_DataBook.pdf

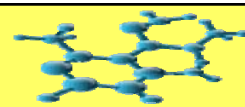


MIND YOUR T AND E

Time and effort reporting continues to be the focus of major funding agency auditors. The latest National Science Foundation report listed findings at the University of Delaware where salaries, fringe and overhead were charged to NSF research programs when such charges did not benefit the research programs. Similar problems were previously found at Yale and other institutions.

Reminder to Rutgers researchers and administrators — 100% effort in summer means exactly that and nothing less. Travel, salary and other activities must relate to the particular project to which expenses are charged. Faculty requesting three months of summer salary forgo vacation and must receive the approval of the Department Head/Dean.





POST AWARD CORNER

From the Desk of Sanjana Rimal

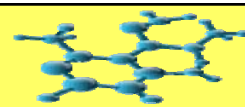
The Newark Grants Office is charged with ensuring proper stewardship and financial management of the funds received for the 400+ current grants and contracts awarded to our Principal Investigators. It is in this effort that we ask you for details about various financial transactions hitting your grant or contract accounts. Our campus strategic plans point for this revenue stream to grow for the foreseeable future for many reasons. The trajectory of this growth is expected from federal grants. With this in mind, I would like to remind all readers of the importance of accurate and timely submission of time and effort reporting.

Time and Effort Reporting

The federal government continues to be active in their review of time and effort reporting compliance. Audit findings due to incomplete, inaccurate or late submission of time and effort reports can and have resulted in large cost disallowances and penalties at other universities. The latest National Science Foundation report listed findings at the University of Delaware where salaries, fringe and overhead were charged to NSF research programs when such charges did not benefit the research programs. Similar problems were previously found at Yale and other institutions.

Rutgers captures certification of effort for salaried employees on **Personnel Activity Certification Reports (PACE)** which are issued semi-annually. These reports are sent out twice a year, late June and Dec for PIs to review and certify time and effort on specific awards. Office of Management and Budget (OMB) Circular A-21 requires that the University have a system in place for certifying salaries and wages associated with federally sponsored agreements. The Circular stipulates that the certification reports should reasonably reflect effort allocated to the activities for which the employee is compensated and that they are to be signed by a responsible official with firsthand knowledge of the work performed using suitable means of verification. For your reference, additional information on effort reporting policies and procedures can be found on http://postaward.rutgers.edu/PACER_Home.htm.





POST AWARD CORNER cont'd

From the Desk of Sanjana Rimal

Reminders When Reviewing PACE Reports

Ensure that the accounts listed on the PACE Report fall under your area of responsibility. If none of the grant accounts listed on the report fall under your area of responsibility, return the report to the DGCA office as soon as it is received. If one or more of the grant accounts listed on the report do not fall under your area of responsibility, then indicate on the report which account(s) you are certifying.

Ensure that the proper account numbers have been charged and the account distribution is correct. If not, then you need to prepare a cost transfer as soon as possible in order to initiate a change in distribution and attach a copy of it to the completed PACE when returning it.

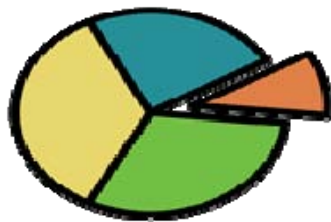
Check if there are any reallocations listed on the PACE Report. If so, and they had an effective cost transfer date that was prior to the PACE reporting period, attach a copy of the reallocating document. Keep in mind that the dollar amounts listed on the report represent a six-month summary of all transactions.

Check if any reallocations were processed for the employee after the PACE reporting period. If so, and if they had an effective cost transfer date that fell within the reporting period, attach a copy of the reallocating document to the PACE Report.

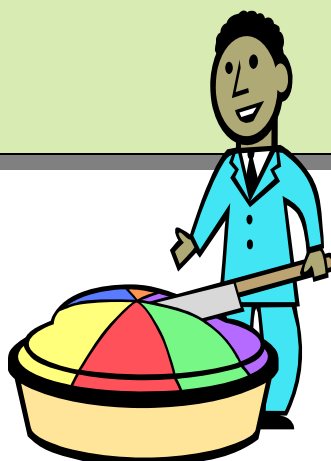
Ensure that the PACE Report is properly certified. Line 6 a) should be certified when the distribution on the report is appropriate and reasonable in relationship to the work performed. Line 6 b) should be certified when the distribution is not correct, in which case a reallocating document should be attached to the PACE Report.

Ensure that the appropriate individual signs the PACE Report. This individual should be the principal investigator, the named employee, or someone who oversees the named employee and is knowledgeable of their effort on the project(s). Subordinates of the named individual cannot sign for the named individual on the PACE Report.

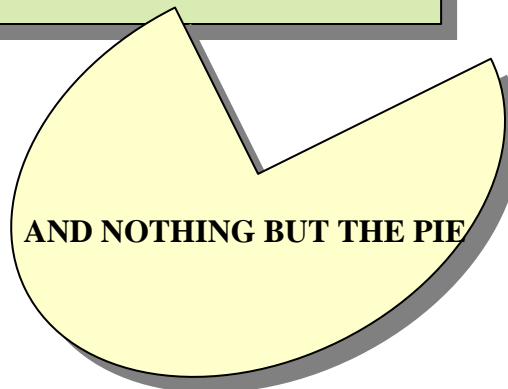
Return the PACE (Green) Report to the DGCA Office If you are unable to return the report within a reasonable timeframe, then you should contact the PACER Unit and inform them about any extenuating circumstances.



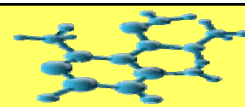
THE PIE



THE WHOLE PIE



AND NOTHING BUT THE PIE



POST AWARD CORNER cont'd

From the Desk of Sanjana Rimal

2009/2010 Fringe Benefit Rates

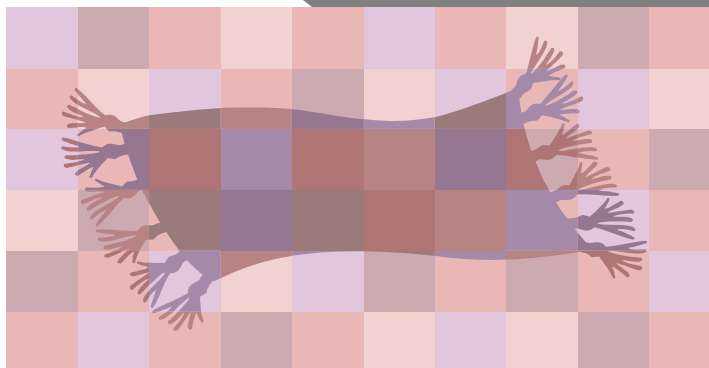
Please note that these changes were reflected on the Oracle General Ledger on Monday, February 15, 2010. The change was made retroactively to July 1, 2009.

The University and the U.S. Department of Health and Human Services has signed an agreement which established the University's fringe benefit rate for the 2009/2010 fiscal year. Effective July 1, 2009, the rate for full-time employees decreased from 35.20 percent to 34.60 percent of salaries, as a result primarily due to decreases in the pension component of the state portion of the rate.

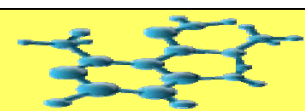
The University will apply rates to certain other categories of salaries and wages in order to more closely match fringe benefit eligibility with employment type. The table that summarizes the rates that is effective July 1, 2009 for the various categories of salaries and wages paid from sponsored programs may be found at <http://postaward.rutgers.edu/fb.html>.

Tuition remission for Graduate/Teaching Assistants employed on a grant-funded project will continue to be charged as a direct cost, as required by Federal regulations. It will not be included in the MTDC base for application of the facilities and administrative cost rate. Proposal developers should budget the cost of tuition remission per the Office of Research and Sponsored Programs rates indicated under the Preparing a Proposal section on their website at ORSP.rutgers.edu.

Questions concerning the application of these rates to sponsored programs should be directed to the Division of Grant and Contract Accounting at (732) 932-0165 ext. 2129 or the Office of Research and Sponsored Programs at (732) 932-0150 ext. 2212. Questions concerning the application of these rates to the other self-supporting activities should be directed to the Division of University Accounting at (732) 445-2133. Cost Transfers:



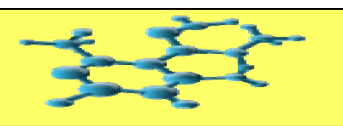
**THE
FRINGE
ELEMENT**



List of Awards for Rutgers Newark (January 2010 – March 2010)

LAST NAME	FIRST NAME	DEPARTMENT	FUNDING AGENCY	TITLE	AMOUNT	TYPE	
Bell	Anonda	Paul Robeson Gallery	NJ State Council on the Arts	Paul Robeson Gallery NJSCA General Program Support FY2010	\$14,463	Renewal	
Benasich	April	CMBN	Communities Fdn. of Texas	Continuing Support for the Carter Center for Neurocognitive Research	\$50,000	Renewal	
Boxer	Paul	Elizabeth Sloan-Power	FASN-Psychology	NIH/NIMH	Multidimensional Assessment of Youth's Exposure to Violence	\$154,500	Continuation
Bush-Baskette	Stephanie	Cornwall Center	Newark Dept. of Child & Family Well Being	City of Newark Community Health Profile Update -2009	\$8,400	New	
Bush-Baskette	Stephanie	Cornwall Center	NJ Office of the Attorney General	Research Support for the New Jersey Attorney General's Reentry Coordinating Council	\$10,000	New	
Buzsaki	Gyorgy	CMBN	NIH/NINDS	Network cooperation in the hippocampus in vivo	\$301,130	Continuation	
Clear	Todd	School of Criminal Justice	NJ Office of the Attorney General	COMPSTAT	\$274,256	Continuation	
Cohen	Laura	School of Law	The Iolta Fund of the Bar of New Jersey	Eric Neisser Pro Bono Service Program	\$5,000	Renewal	
Farris	George	RBS-MGB	IEEE, Inc.	Technology Management Research Center	\$7,800	Supplement	
Freund	Sandy	Cynthia Blum	Law School-Newark	IRS	Low Income Taxpayer Clinic	\$89,520	Renewal
Friedman	Wilma	FASN-Biology	NIH/NINDS	Neurotrophin Actions in the Injured Brain.	\$30,418	Supplement	
Gates	Alexander	FASN-Earth and Environmental Sciences	EXXON Mobil Fdn.	Newark Geosciences Scholars Project	\$10,000	Continuation	
Gates	Alexander Matthew Shook	FASN-Earth and Environmental Sciences	Palisades Interstate Park Commission	Highlands Environmental Research Institute	\$10,000	Continuation	
Gluck	Mark	CMBN	Wyeth Pharmaceuticals	African-American and Alzheimer's Disease Brochure	\$12,000	New	
Gluck	Mark	Catherine Myers	CMBN	NIH/NIMH	Serotonin Genes & Individual Differences in Reward vs. Punishment-Based Learning	\$77,084	New
He	Huixin	FASN-Chemistry	NSF	A Sensitive Molecular Detection Platform Based on Self-Assembled Conducting Polymer Nanojunctions in a Carbon Nanotube Network	\$115,000	Continuation	

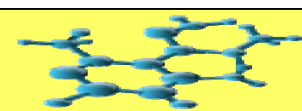




List of Awards for Rutgers Newark (January 2010 – March 2010)

LAST NAME	FIRST NAME	DEPARTMENT	FUNDING AGENCY	TITLE	AMOUNT	TYPE	
Hill	Diane	OCCR	Victoria Fdn.	RU Ready for Work	\$20,000	Renewal	
Hill	Diane	OCCR	City of Newark	RU Ready For Work	\$250,000	New	
Hill	Diane	OCCR	Community Fdn. of NJ	Newark Mentoring Coalition	\$20,000	New	
Hill	Diane	OCCR	Various	Newark Mentoring Coalition	\$7,500	New	
Holzappel	Claus	Kirk Moloney	FASN-Biology	US Army Corps of Engineers	Understanding and Combating the Fire-enhancing Impact of Non-native Annuals in Deserts	\$487,720	New
Holzer	Marc	School of Public Affairs and Administration	Public Technolgy Institute	The City of Prague E-Government Study Project	\$96,300	New	
Hooper	Brenda	Deborah Smarth	NJSBDC/RBS	Amper, Politziner & Mattia, LLP	2010 SBIR Conferences	\$6,974	Renewal
Hopper	Brenda	Deborah Smarth	NJSBDC/RBS	NJ Transit	NJ Transit Certification/Outreach Project	\$239,747	New
Hopper	Brenda	Deborah Smarth	SBDC/RBS	Lowenstein Sandler	2010 SBIR Conferences	\$5,200	Continuation
Jones	Rachel	College of Nursing	NIH/NINR	Reducing HIV Risk in Urban Women: Soap Opera Videos on Video-Capable Cell Phones	\$59,062	Supplement	
Jordan	Frank	FASN-Chemistry	NIH-NIGMS	Structure and Mechanism of alpha-Ketoacid Decarboxylases and Dehydrogenases	\$370,300	Continuation	
Kelling	George	School of Criminal Justice	U.S. Dept. of Justice	National Initiatives: Enhancing Law Enforcement	\$249,453	New	
Kim	Haesun	FASN-Biology	Univ. of Kansas Center for Research, Inc	Caveolin-1 and Altered Neuregulinism in Diabetic Neuropathy	\$21,898	Continuation	
Kim	Haesun	FASN-Biology	NJ Commission on Spinal Cord Research	Promoting myelination on adult axon by soluble Neuregulin-1	\$64,000	New	
Kim	Haesun	FASN-Biology	NIH/NINDS	Functional Analysis of erbB2 Signaling in Myelin-Forming Glial Cells	\$259,470	Continuation	
Kirby	Edward	Chung Tsai	FASN-Biology	Consortium for Plant Biotechnology Research, Inc.	Mechanism for Growth and Stress Resistance in GS Poplar.	\$227,610	New
Komisaruk	Barry	FASN-Psychology	NIH/NIGMS	MBRS Program at Rutgers Newark	\$251,434	Continuation	
Koos	Tibor	James Tepper	CMBN	NIH/NINDS	Dopamine modulation of the neostriatal feedback circuitry	\$300,753	Continuation
Mao	Zhengyu	FASN-Mathematics & Computer Science	US -- Israel Binational Science Fdn.	The Gross-Prasad conjecture	\$56,620	New	

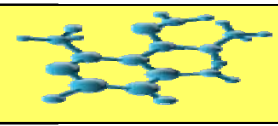




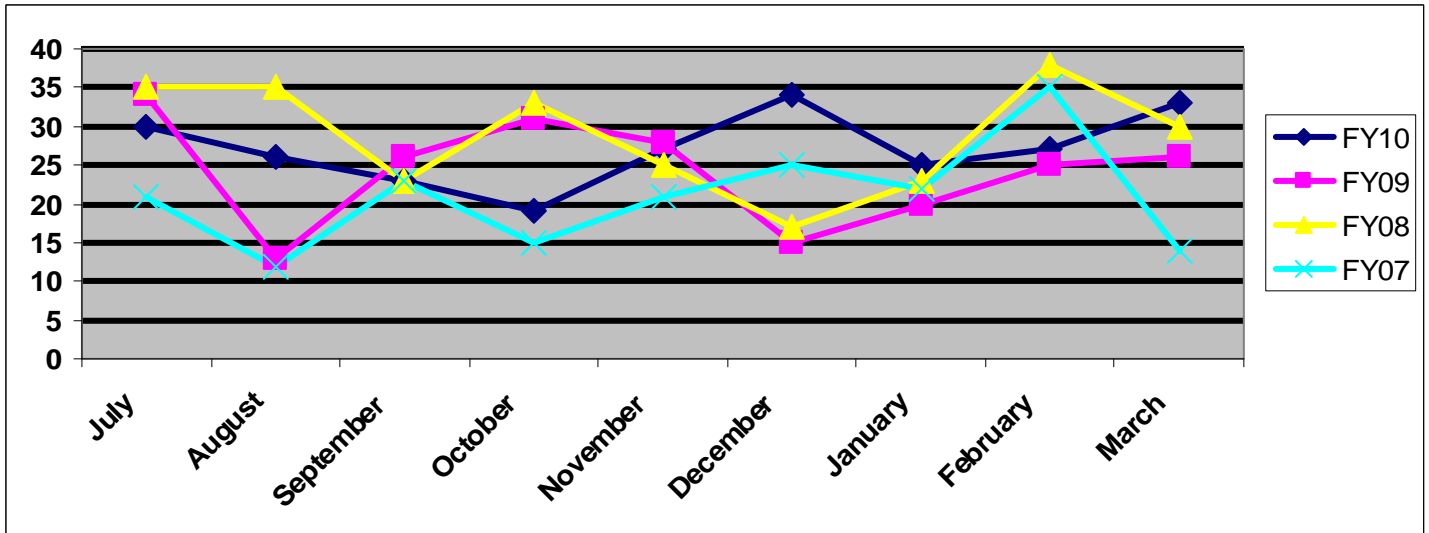
List of Awards for Rutgers Newark (January 2010 – March 2010)

LAST NAME	FIRST NAME	DEPARTMENT	FUNDING AGENCY	TITLE	AMOUNT	TYPE	
Murnick	Daniel	FASN-Physics	Planetary Emissions Management, Inc.	Near-Surface Leakage Monitoring for the Verification and Accounting of Geologic Carbon Sequestration Using a Field Ready 14C Isotopic Analyzer	\$54,260	New	
Murnick	Daniel	FASN-Physics	Planetary Emissions Management, Inc.	MRI Development of Carbon 14 Analyzer,	\$100,000	New	
ogilvie	dt	RBS-MGB	Prudential Fdn.	Entrepreneurship Pioneers Initiative (EPI)	\$125,000	New	
Pare	Denis	CMBN	NIH/NIMH	Role of Intercalated amygdala neurons in the extinction of conditioned fear	\$386,250	Continuation	
Piotrowiak	Piotr	FASN-Chemistry	US Dept. of Energy	Femtosecond Emission Microscopy of Solar Energy Materials	\$170,000	Renewal	
Price	Clement	FASN-History	NJ Historical Com.	Marion Thompson Wright Lecture Series - 2010	\$5,000	New	
Price	Clement	FASN-History	County of Essex	Symposium on North African Dance	\$2,500	New	
Siegel	Ralph	CMBN	Army Research Office (ARO)	Spatial Brain Control Interface using Optical and Electrophysiological Measures	\$150,061	Continuation	
Slater	Lee	FASN-Earth and Environmental Sciences	Battelle Energy Alliance, LLC	Design and analysis of geophysical investigations of reactive processes	\$20,000	New	
Tepper	James	Elizabeth Abercrombie	CMBN	NIH/NINDS	10th Triennial International Basal Ganglia Society Meeting	\$20,000	New
Tricomi-Shiflett	Elizabeth	Michael Shiflett	FASN-Psychology	NIH-NIDA	ARRA: Investigating the neural processing of negative feedback across rats and humans	\$431,678	New
Van Ryzin	Gregg	School of Public Affairs and Administration	Sloan Fdn.	Civil Panel: Report and Request for Renewed Funding	\$123,000	New	
Veysey	Bonita	School of Criminal Justice	NJ Office of the Attorney General	Fugitive Safe Surrender	\$37,500	New	
Walker-McCall	Deborah	FASN-AFC	New Jersey Institute of Technology	NJIT Consortium for Pre-College Education	\$130,000	Renewal	
Williams	Junius	FASN-Urban Education	The Schumann Fund for NJ	Committee of Advocates for Newark's Children	\$18,000	Renewal	
Williams	Junius	FASN-Urban Education	Prudential Fdn.	Committee of Advocates for Newark's Children	\$30,000	Renewal	
Zaborszky	Laszlo	CMBN	NIH/NINDS	Afferent Regulation of Cholinergic Forebrain Neurons	\$326,020	Renewal	

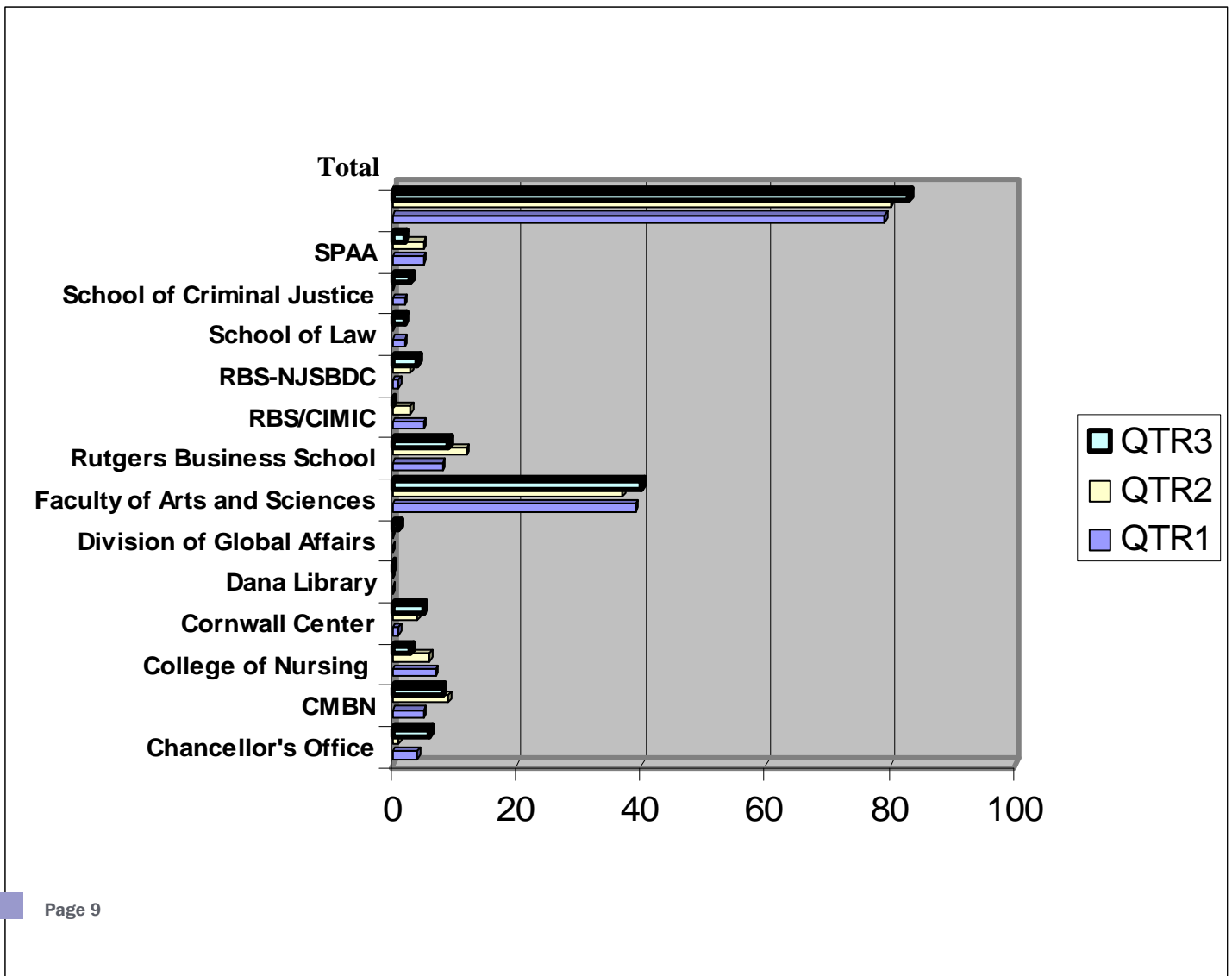


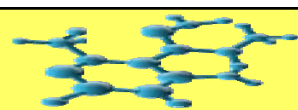


Number of Proposals by Month (based on completed endorsement forms), July 2009-March 2010



Number of Proposals by Dept. (based on completed endorsement forms), July 2009-March 2010





ADD AN INTERNATIONAL DIMENSION

To your NSF proposal



The NSF's Office of International Science and Engineering (OISE) exists to promote collaboration among the international scientific and engineering communities. Why consider adding an international collaboration to your next research or education project? Over 20% of the world's scientific and technical articles in 2005 had authors from two or more countries, compared with 8% in 1988. According to NSF Director Arden Bement, Jr., "International cooperation in science is not a luxury; it is a necessity – and the foundation for the future."

OISE supports international activities by providing co-funding for new proposals submitted to NSF disciplinary programs and co-funding supplements to existing NSF grants. Key elements for OISE co-funding include: intellectual collaboration; leveraging of expertise and resources; and involvement of U.S. junior researchers and students in order to develop a globally-engaged science and engineering workforce. The main goal of OISE is to give U.S. students and junior researchers international collaborative research training and to enable the creation of research networks on which to build future collaborations.

OISE programs focus on different career stages, and include: International Research Experiences for Students (IRES); East Asia & Pacific Summer Institutes (EAPSI); Doctoral Dissertation Enhancement Projects (DDEP); International Research Fellowships Program (IRFP); and Advanced Studies Institutes (ASI)

International Research Experiences for Students (IRES): Faculty organize an international research experience for U.S. undergraduate/graduate students; Scale of Funding: \$50,000 per year for 3 years; Point of Contact: Marjorie Lueck (mlueck@nsf.gov).

East Asia and Pacific Summer Institutes (EAPSI): Grad student (Ph.D. or M.S.) submits proposal to NSF; Students can work with hosts in Australia, China, Japan, South Korea, New Zealand, Singapore, or Taiwan; Scale of Funding: \$5,000 stipend, travel expenses; Point of Contact: Jong-on Hahm (jhahm@nsf.gov).

Doctoral Dissertation Enhancement Projects (DDEP): Support for doctoral research overseas; Must be collaborative, with evidence of intellectual involvement of foreign institution; U.S. faculty advisor is PI on proposal; Scale of Funding: may not exceed \$15,000; Point of Contact: [OISE Regional/Country Program Officer](#).

International Research Fellowships Program (IRFP): International post-doc program; Eligibility: no longer than two years beyond Ph.D. at time of application; Scale of Funding: dependent on location; Point of contact: Susan Parris (sparris@nsf.gov).

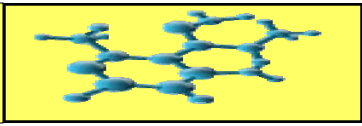
Advanced Studies Institutes (ASI): Short courses on leading-edge research themes; Level: advanced graduate students, postdocs, and junior faculty; Supported by Department of Energy and NSF; Scale of Funding: may not exceed \$100,000; Point of Contact: Harold Stolberg (hstolber@nsf.gov).

OISE also catalyzes new international collaborations by funding **planning visits and workshops** to develop partnerships with non-U.S. institutions.

Planning Visits: Supports travel by small teams of U.S. researchers to plan a *new* collaboration; Scale of Funding: up to \$20,000. Point of Contact: [OISE Geographic Region/Country Program Officer](#)

Workshops: Meetings co-organized by U.S and foreign investigator; Scale of Funding: up to \$60,000; Point of Contact: [OISE Geographic Region/Country Program Officer](#)

Continued



ADD AN INTERNATIONAL DIMENSION

To your NSF proposal
Cont'd

OISE also conducts the **Partnerships for International Research and Education (PIRE)** program. The objectives of the PIRE program are to: Enhance research excellence via international partnership and collaboration; Promote the development of a diverse, globally engaged U.S. scientific and engineering workforce, and; Strengthen the capacity of U.S. institutions to engage in and benefit from international research and education collaborations.

PIRE proposals have no budget ceiling; Eligible institutions may submit 3 preliminary proposals; *Next competition in 2011.*

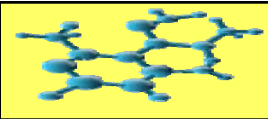
In addition, NSF OISE and USAID have created a memorandum of understanding which identifies themes or areas of joint interest to both agencies, including: *Water; Information Technology; Supply Chains; Construction Research; Food Security; Hazard Mitigation.* Point of contact: DeAndra Beck (dbeck@nsf.gov)

However, OISE will not fund individual or group travel to international conferences, projects without intellectual collaboration, or costs for foreign participants (consult OISE for country exceptions).

For more information about OISE programs, visit: www.nsf.gov/oise, or send questions to OISE's program officer, Ed Murdy (emurdy@nsf.gov)

(Article extracted from Rutgers Sponsored Research News, March 25, 2010)





**THANK YOU
AND
FAREWELL**

The Research Office thanks Gene A Vincenti, Executive Vice Chancellor, for his leadership and oversight of our office. We extend our very best wishes to him as he leaves the Newark Campus to begin new adventures in life.

We make a living by what we do, but we make a life by what we give.
Winston Churchill.



Research Office
Blumenthal Hall, Suite 206
249 University Ave
Newark, NJ 07102
Phone: 973-353-1537
Fax: 973-353-1536

<http://researchoffice.newark.rutgers.edu/>

Contacts:

Jacqueline Cornelius, Director

973-353-1538, jcorneli@andromeda.rutgers.edu

Patricia Bender, Research Contracts/Grants Specialist

973-353-1539, pbender@andromeda.rutgers.edu

Wanda James, Assistant

973-353-1537, wandaj@andromeda.rutgers.edu