

Research News

Welcome

The fiscal year is soon coming to a close. Admire all the flurry of final exams and graduations the business of sponsored research advances as the figures demonstrate. The numbers also tell the story of shifts in funding trends and of those who have managed to buck the trend.

This issue provides some of the various tools provided by the Research Office to assist faculty in writing their own success stories.



Spotlight on...

Jaideep Vaidya, Assistant Professor
and **Yao Zhao, Assistant Professor**



The National Science Foundation describes its CAREER award as one of its “most prestigious awards in support of junior faculty “ [See p. 5 for more information]

Jaideep is faculty in the Business School and also works closely with the Center for Information Management, Integration and Connectivity (CIMIC). He receives close to half a million dollars over five years to support his research on *Collaborative Optimization with Limited Information Disclosure*. Briefly, he aims to develop a suite of distributed privacy-preserving optimization techniques using secure computation tools and methodologies.

Yao is also faculty in the Business School. He will use the more than \$400,000 to support his project entitled “*Project-Driven Supply Chains (PDSCs) - Integrating Supply Chain Planning with Project Management*” Yao will develop models that integrate supply chain and project management.



Profiles of dt Ogilvie (RBS) and Bart Krekelberg (CMBN) were featured in the Rutgers 2007 annual report of sponsored research: <http://orsp.rutgers.edu/reports.php#FY07>

A Funding Trend to Watch

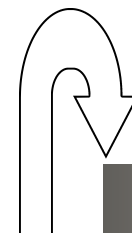
With two months remaining in the fiscal year 2008 the Newark campus records support the general understanding that there is reduced funding coming from federal agencies such as the National Institutes of Health (NIH) and the National Science Foundation (NSF).

Total federal funding remains at about 50% for the campus but in a comparison between FY 07 and FY 08 to date there is a 66% drop in funding from NIH and an 8% drop from NSF. The Research Office continues to be concerned with the decreasing funding levels from federal agencies, especially the NIH and NSF. Efforts are underway to invite officials from NIH and NSF to visit Rutgers–Newark and share with faculty the agencies' funding priorities.



A Tale of Success

Lee Slater, Associate Professor in Earth and Environmental Sciences, gives support to the old adage that success attracts success, or is it money. He is adding to his portfolio of current active funded projects. He is being awarded funds from the US Dept. of Energy for his project “*A Geophysical Characterization and Monitoring Strategy For Determining Hydrologic Processes in the Hyporheic Corridor at the Hanford 300-Area.*” Lee is primarily responsible for the project in collaboration with colleagues at the Idaho National Laboratory, Pacific Northwest Laboratory and the US Geological Survey.



Inside This Issue

Welcome	1
Spotlight on	1
Funding Trends	1
List of FY08 awards as of March 2008	2-3
Proposal Summary as of March 2008	4
Training Tools	5

List of Awards for Rutgers Newark FY08 (as of March 31, 2008)

PI LAST NAME	PI FIRST NAME	DEPT	FUNDER	TITLE	AMOUNT	TYPE
Abercrombie	Elizabeth	CMBN	Hereditary Disease Fdn.	Dysfunctions of the Basal Ganglia Circuitry in Mouse Models of Huntington's Disease in Vivo	\$75,000	New
Auffant	Charles	Law School	SNJ -Bar Fdn.	Youth Advocacy Project	\$95,000	Renewal
Benasich	April	CMBN	MIT	Longitudinal Development and Intermediate Phenotypes of Dyslexia	\$115,000	New
Blum	Cynthia	Law School	Internal Revenue Service	Low Income Taxpayer Clinic	\$90,000	Renewal
Booker	Cary	FASN-Academic Fdns	NJIT	NJIT Pre-College Education	\$59,600	Renewal
Bush-Baskette	Stephanie	Cornwall Center	City of Newark, NJ	Urban Newark Behavioral Risk Factor Survey	\$200,000	New
Buzsaki	Gyorgy	CMBN	Epilepsy Foundation	Dynamics in the medial entorhinal-hippocampal network after status epilepticus	\$40,000	New
Callahan	Kathe	Public Admin.	IBMCenter for the Business of Government	Internal and External Perspectives: Collaborating to Strengthen the Relevance and Utilization of Performance Management	\$10,000	New
Cantwell	John	RBS-MGB	University of Michigan	Academy of International Business Annual Conference Program	\$10,000	New
Canty-Barnes	Esther	Law School	NJ Court Improvement Committee	NJ Court Improvement Committee Program for Newark Law Special Education Clinic	\$31,000	Continuation
Eller	Lucille S	College of Nursing	National Cancer Institute	Intervention to Enhance Quality of Life in Men with PCa:Development and Testing	\$154,500	Continuation
Friedman	Wilma	FASN-Biology	National Institute of Health	A Genetic Approach to Study the p75 Neurotrophin Receptor	\$249,096	Continuation
Galoppini	Elena	FASN-Chemistry	Dept .of Energy	Model Dyes for Study of Molecule/Metal Oxide Semiconductor Interfaces and Electron Transfer Process	\$140,000	Renewal
Gao	Yuan	FASN-Earth & Environmental Sciences	SNJ-MERI (US EPA)	Monitoring of Air Toxic Particulate Pollutants from Heavily Trafficked New Jersey Turnpike	\$2,000	Supplement
Gates	Alexander	FASN-Earth & Environmental Sciences	ExxonMobil Fdn.	Newark Geosciences Scholars Project	\$15,000	Renewal
Gates	Alexander	FASN-Earth & Environmental Sciences	NYS-Dept. of Education	Geologic Mapping in the Cornwall Quadrangle, Hudson Highlands, NY	\$8,800	Continuation
Gluck	Mark	CMBN	The Bachmann-Strauss Dystonia & Parkinson Fdn.	Dissociating Cerebellar from Basal Ganglia Deficits in Learning and Cognition in DYT1 Gene Carriers	\$50,000	New

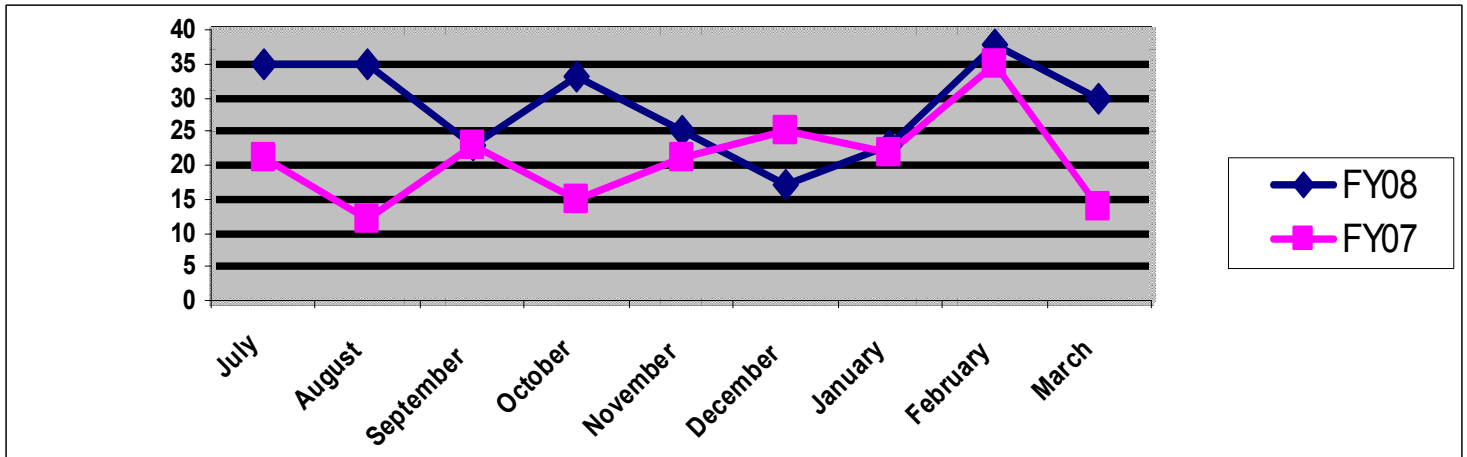


List of Awards for Rutgers Newark FY08 (as of March 31, 2008 Contd.)

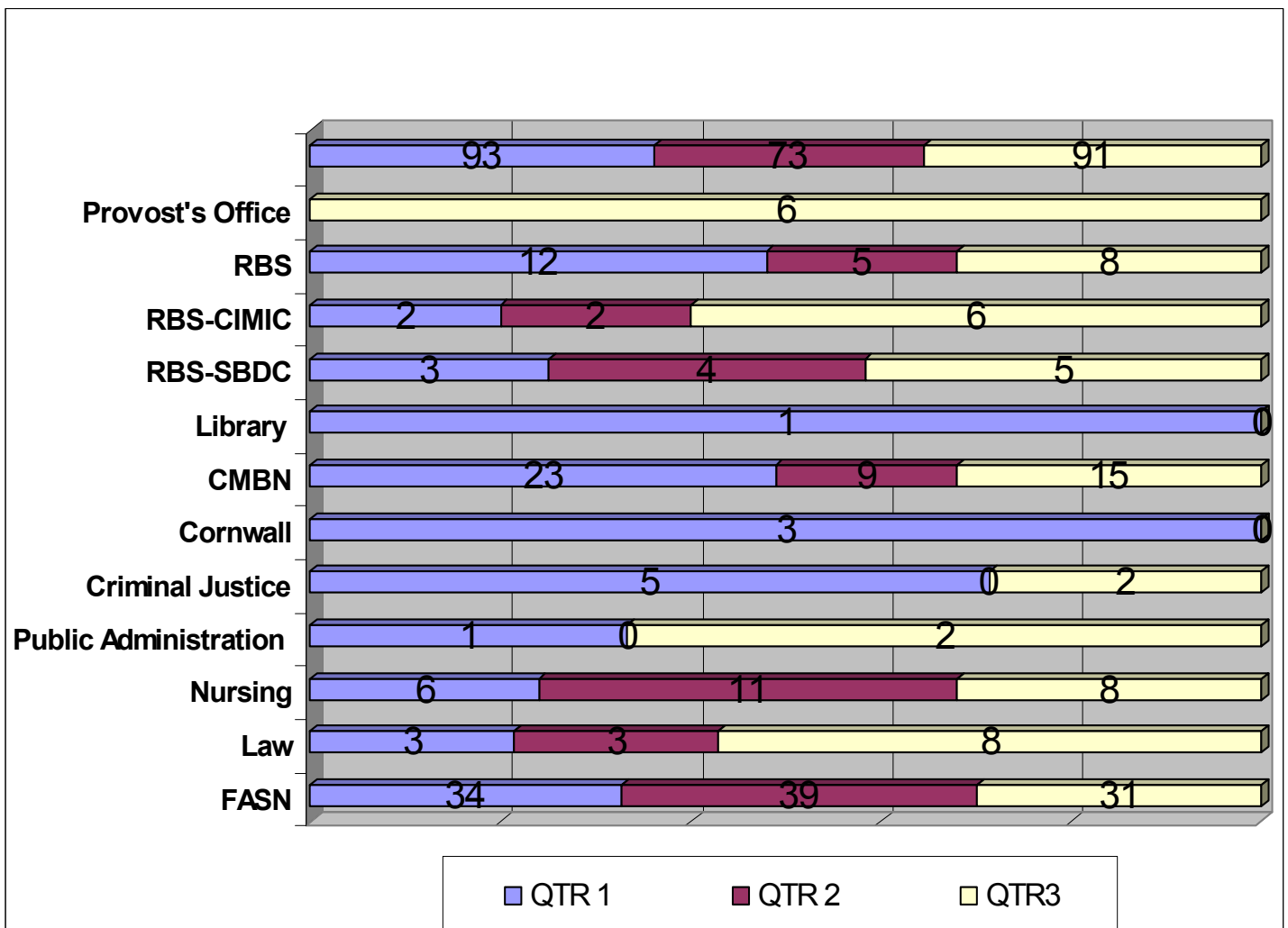
Grant	Erica	FASN-Dean's Office	CUNY Research Fdn.	Dissemination of Self Regulated Learning Model to Improve Student Performance	\$11,603	Continuation
Guo	Li	FASN-Mathematics	National Security Agency	Rota-Baxter Algebra and Related Topics	\$18,000	New
He	Huixin	FASN-Chemistry	NSF	A Sensitive Molecular Detection Platform Based on Self-Assembled Conducting Polymer Nanojunctions in a Carbon Nanotube Network	\$133,595	New
Hill	Diane	OCCR	Newark Public Schools	College Tutors Partnership Program	\$8,000	Renewal
Hill	Diane	OCCR	MCJ Foundation	RU Ready for Work	\$28,800	New
Hooper	Brenda	NJSBDC	Slattery-Skanska, Inc.	Procurement Direct Service	\$5,000	New
Hopper	Brenda	RBS-SBDC	County of Hudson	Hudson County Vendor Development County	\$60,000	New
Hopper	Brenda	RBS-SBDC	Various Corporate	SBIR Workshops	\$12,900	New
Hopper	Brenda	RBS	Verizon	2008 Success Luncheon	\$5,000	Renewal
Kelling	George	Criminal Justice	University of Chicago (Robert Wood Johnson)	Ceasefire	\$342,899	New
Kettenring	Patricia	RBS	New Jersey State Council On The Arts	Arts Management Internship Project	\$20,000	Renewal
Kitson	Jessica	Law School	IOLTA Fund of the Bar of NJ	Eric R. Neisser Pro Bono Program	\$10,000	Renewal
Koos	Tibor	CMBN	NIH/NINDS	Dopamine Modulation of the Nesotrital Feedback Circuitry	\$303,790	Continuation
Plinio	Alexander	RBS-Organization Management	Victoria Foundation	Center for Nonprofit and Philanthropic Leadership	\$10,000	New
Plinio	Alexander	RBS-Organization Management	Hoffman LaRoche	Center for Nonprofit and Philanthropic Leadership	\$1,000	New
Price	Clement	FASN-History	NJ Council for the Humanities	Marion Thompson Wright Lecture Series 2008	\$7,000	Renewal
Price	Clement	FASN-IECME	SNJ- Historical Commission	Marion Thompson Wright Lecture Series 2008	\$6,500	Renewal
Siegel	Ralph	CMBN	NIH	Fluorescent Protein Sensors of Neural Activity	\$75,155	Continuation
Sullivan	Mercer	School of Criminal Justice	SNJ Juvenile Justice Com.	Evaluation of Family-Oriented Juvenile Re-entry Programs in New Jersey	\$69,989	Continuation
Tallal	Paula	CMBN	University of California -- San Deigo	The Temporal Dynamic of Learning	\$219,000	Continuation
Vaidya	Jaideep	RBS-CIMIC	NSF	Collaborative Optimization with Limited Information Disclosure	\$90,000	New
Veneciano	Daniel	FASN/Visual Arts	New Jersey State Council On The Arts	General Program Support 2008	\$20,544	Renewal
Veneciano	Daniel	FASN/Visual Arts	New Jersey State Council On The Arts	Arts Education Special Initiative 2008	\$11,150	Renewal
Walker-McCall	Deborah	FASN-Academic Fdns.	NJIT	Project GEOS (College Bound)	\$83,600	Renewal
Williams	Junius	FASN-Abbott Leadership Institute	Prudential Foundation	Committee of Advocates for Newark's Children	\$60,000	Renewal
Williams	Junius	FASN-Abbott Leadership Institute	Prudential Foundation	Abbott Leadership Institute	\$78,750	Renewal
Williams	Junius	FASN-Abbott Leadership Institute	Victoria Foundation	Abbott Leadership Institute	\$25,000	Renewal
Williams	Junius	FASN-Urban Education	The Geraldine R. Dodge Fdn.	Abbott Leadership Institute	\$40,000	Renewal
Zhao	Yao	RBS	NSF	Project Driven Supply Chains Integrating Supply Chain Planning with Project Management	\$400,016	New



Rutgers-Newark - Number of Submitted Proposals by Month July 07-March 08



Rutgers-Newark - Number of Submitted Proposals by Department July 07-March 08



Take Advantage of These Tools provided by the Research Office

NEW ON OUR WEBSITE



GRANTS ADVISOR PLUS:

http://researchoffice.newark.rutgers.edu/index_files/Page989.htm

The Research Office now subscribes to the above funding listings. The lists are very easy to navigate. The list is updated monthly and is grouped under the subject headings—

Fine Arts; Humanities; Sciences;
Social Sciences; Federal Register;
Education; International

Health Related; Unrestricted Other; Minorities/Women

We hope you find it useful. Your feedback is welcome. Let me know if unable to access as your computer IP is needed to connect.

NSF Career Proposal Workshop



Dr. Michael Pazzani, VP for Research and Graduate and Professional Education will travel to Newark on May 14, 2008 to present a panel of NSF personnel and prior recipients of this award. The panel will offer tips and strategies for the CAREER proposal. The event will be hosted by Dr. Philip Yaegle, Dean—FASN. More details to follow.
http://www.nsf.gov/funding/pgm_summ.jsp?pims_id=503214

New Administrators Workshops



The Research Office will now provide training for a small core of administrators new to sponsored research. The workshops are in six modules and will meet monthly.

The workshops will be repeated on a continuous basis. There will be games, prizes and food too!

Do let us know if you or any of your staff should be included in future sessions.

<http://researchoffice.newark.rutgers.edu/>

RUTGERS
NEWARK

Research Office
Blumenthal Hall, Suite 206
249 University Ave
Newark, NJ 07102
Phone: 973-353-1537
Fax: 973-353-1536

Contacts:

Jacqueline Cornelius, Director

9973-353-1538, jcorneli@andromeda.rutgers.edu

Patricia Bender, Research Contracts/Grants Specialist

973-353-1539, pbender@andromeda.rutgers.edu

Malika Bennett, Assistant

973-353-1537, mbennet@andromeda.rutgers.edu