


 The logo features a grid of squares in shades of gray and beige on the left side. To the right, the word "RUTGERS" is written in a large, red, serif font. Below it, "Research Office | Newark" is written in a smaller, gray, sans-serif font.

RUTGERS

Research Office | Newark

Research News

Welcome

This issue looks at the total research activity on the Newark Campus during the period July 1, 2006 – June 30, 2007.

The funded activities in Newark extend beyond the research laboratories and campus boundaries and the section *Rutgers-*

Newark In The Community captures some brief insights into those activities. It is by no means comprehensive

but based primarily on awards received in FY 2007.



Spotlight on...

What does earth and environmental sciences have to do with the Newark Museum, Newark teachers and current and potential future students of Rutgers Newark? A great deal when it comes to the National Science Foundation funded **\$1.7 million** over 5 years that was recently awarded to Dr. Alexander Gates, Chair, FASN-Department of Earth and Environmental Sciences. Dr. Gates and Dean Cary Booker in Academic Foundations in collaboration with Dr. Ishmael Calderon at the Newark Museum, Dr. Charles Murphy at Kean University and industry

partners will use the funds to generate a complete network of activities that will provide Newark Public School students and teachers with seminars, research experiences, training and mentoring. The aim is to encourage greater interest in the geosciences.

This grant builds on a current multi million NSF grant awarded to Dr. Gates (based on a proposal by Dr. Jeffrey Kidder). In collaboration with Dr. Calderon at the Newark Museum and the Newark Public School System this program established five model science classrooms and involves Rutgers graduate students as men-

tors, undergraduate assistants and Newark teachers and students.

The Small Business Development Center (RBS-SBDC) under the direction of Brenda Hopper is consistently at the top of the list in terms of the external dollars awarded to the Newark Campus. Now in its 27th year of federal funding the Center receives approximately \$3 million each year from the US Small Business Administration and the State of New Jersey to administer several SBDC centers at universities throughout the state. The Center also generates income for various activities from local foun-

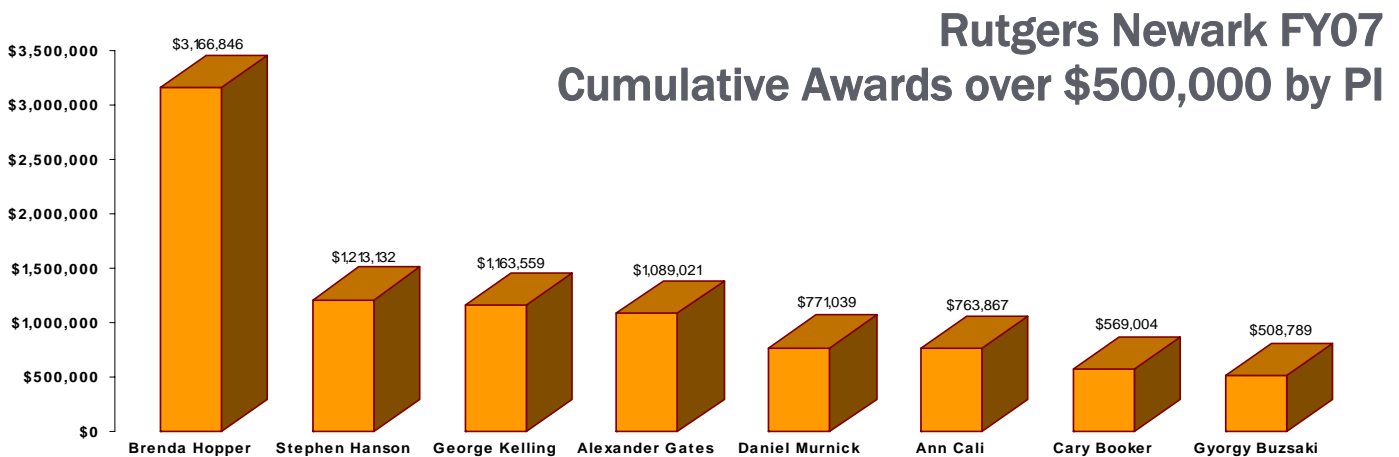
dations and corporate sponsors.

Inside this issue:

Welcome	1
Spotlight on	1
Awards over \$300K	2
Cumulative Awards of \$500K	2
FY 07 Awards by Department and By Funding Source	3
Rutgers in the Community	4
Awards Apr-Jun 2007	5
In Context—The Bigger Picture	6
FY07 Proposal Snapshot	7
Awards from Local Foundations and Industry	8
Training Opportunities	8

Rutgers - Newark FY07 Awards of \$300,000 and over

PI	UNIT	FUNDING AGENCY	TITLE	AWARD AMOUNT	AWARD TYPE
Brenda Hopper	RBS-Small Business Development Center	US Small Business Administration	New Jersey Small Business Development Centers	\$2,316,821	Renewal
Stephen Hanson	FASN/Psychology	James S. McDonnell Foundation	Assessing Brain Interactivity	\$1,213,132	New
Brenda Hopper	RBS-Small Business Development Center	SNJ-Commerce, Economic Growth and Tourism Commission	New Jersey Small Business Development Centers	\$800,000	Renewal
George Kelling	School of Criminal Justice	SNJ-Governor's office	Operation Cease Fire-Police Institute	\$750,000	Renewal
Alexander Gates	FASN-Earth & Env. Scs	NSF	Highlands To Piedmont: Newark, New Jersey Geoscience Scholars Alliance	\$691,599	New
Ann Cali	FASN/Biology	NIH-NIGMS	MBRs Program At Rutgers Newark	\$658,481	Continuation
Gerl Dickson	College of Nursing	Robert Wood Johnson Foundation	Addressing Nursing Workforce Development Issues Through Statewide Coalition	\$455,273	New
Kenneth D Harris	CMBN	NIH-NIMH	Information Processing And Neuronal Coordination In Neocortex	\$405,312	Continuation
Alexander Gates	FASN-Earth & Env Scs	NSF	Graduate Teaching Fellows Newark Public Schools: A Collaborative Model For Developing Inquiry-Driven Science Classrooms	\$387,422	Continuation
Laszlo Zaborszky	CMBN	NIH-NINDS	Afferent Regulation Of Cholinergic Forebrain Neurons	\$349,217	Continuation
Roberta Schorr	FASN/Urban Education	Newark Public Schools	Public Schools System Initiative In Math	\$348,804	Continuation
Cary Booker	FASN/Academic Fdn	Private Foundation	Administrative And Academic Services Agreement	\$342,621	Continuation
Gyorgy Buzsaki	CMBN	NIH-NINDS	Network Cooperation In The Hippocampus In Vivo	\$331,745	Continuation
Tibor Koos	CMBN	NIH-NINDS	Dopamine Modulation Of The Neostriatal Feedback Circuitry	\$316,763	Continuation
James Tepper	CMBN	NIH-NINDS	Nigrostriatal Dopamine Function	\$315,158	Continuation
Bart Krekelberg	CMBN	NIH-NEI	Eye Movement And Visual Perception	\$308,916	New
Daniel E Murnick	FASN/Physics	NIH-NCRR	Laser Based 14C Counting For Biomedical Studies	\$308,256	Continuation
Linda Flynn	College of Nursing	Robert Wood Johnson Foundation	A Multifaceted Approach To Reduce Medication Errors	\$308,254	New
George F Kelling	School of Criminal Justice	SNJ Dept of Public Safety	Police Institute (Safer Cities, Cease Fire)	\$300,000	New
Haesun Kim	FASN/Biology	SNJ-DHHS-NJ Comm. on Brain Injury Research	Effect Of Diffused Axonal Injury On Dendrite And Myelin	\$299,999	New



Rutgers - Newark in the Community

Diane Hill, Director Information and Conference Services, manages the College Tutor Partnership Program in collaboration with the Newark Public Schools. The program benefits both Rutgers students and students in Newark public schools.

Roberta Schorr, FASN Urban Education, has for the last five years collaborated with the Newark Public Schools System to implement the National Science Foundation Systemic Initiative in Mathematics. Her work is supported by more than \$1.5 million in NSF funding.

Junius Williams, FASN Urban Education, directs the Abbott Leadership Institute and received close to \$250,000 from various foundations including MCJ, Prudential, Schumann and Dodge in support of projects that involve Newark students and their parents, teachers, school administrators, school board members, union representatives, incarcerated youth, community advocates along with Rutgers and Montclair State University students.

Clement Price directs the Institute on Ethnicity, Culture, and the Modern Experience and was successful in obtaining over \$200,000 in funding from the Dodge Foundation, JP

Morgan Chase and the Lehrman Institute. The Institute hosts the annual prestigious Marian Wright Lecture Series and promotes activities that engage scholars and Greater Newark citizens in cultural, ethnic and historical matters.

Helen Paxton, Director Office of Communications, along with **Jorge Veneciano**, Gallery Director FASN Visual and Performing Arts and **Patricia Kettering**, RBS Management Education, receive funding each year to present activities that expose artists, musicians and other artists to the community.

The Law School provides many specialized services and clinics that assist the community and provide direct experience for students. **Sandy Freund** and **Cynthia Blum** manage the \$100,000 received each year from the Internal Revenue Service for the Low Income Tax Service. **Esther Canty-Barnes** oversees the Special Education Clinic with support of \$116,000 from the NJ State Bar Foundation and the NJ Court Improvement Committee.



Robert Holmes obtained \$90,000 for the Youth Advocacy Project from the NJ State Bar Foundation and **Jessica Kitson** \$75,000 from the State of New Jersey for the Domestic Violence Advocacy Project. **Randi Mandelbaum** received \$95,000 in support of the Child Advocacy Project from the NJ State Bar Foundation.

Cary Booker, Dean Academic Foundations, collaborates with NJIT in a state funded Consortium for Pre-College Education in Greater Newark and will receive almost \$2 million over 7 years from a private foundation to provide pre-college programming, academic counseling and college application support for Newark high school students.

The Joseph C. Cornwall Center for Metropolitan Studies engages in research and promotes interchanges among schol-

ars, government leaders, community based organizations and private citizens. **Stephanie Bush-Baskette**, Director, is currently conducting an evaluation of the City of Newark's contracting activities to determine if women-and minority-owned enterprises are fairly represented in city-sponsored contracts. **Kelly Robinson**, is developing performance indicators for the Lincoln Park Coast Cultural District (a non-profit working to promote economic redevelopment in the Lincoln Park Neighborhood of Newark). The project will develop indicators that will assist the organization to monitor and track its progress towards meeting its goals.

Rutgers - Newark Awards (April - June 2007)

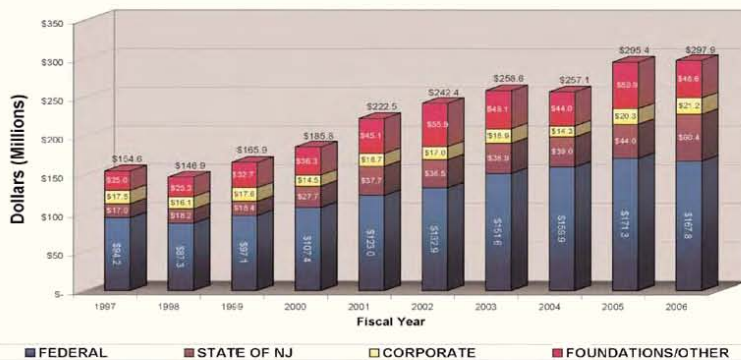
PI	PI dept	Sponsor	Title	Amount	Award type
Vijay Atturi	RBS	DOD-DOA-Army Res. Office	Computer and Communications Security: Issues and Research Directions	\$10,000	New
Cynthia Blum	Law School	IRS	Low Income Taxpayers Clinic	\$90,000	Renewal
Gyorgy Buzsaki	CMBN	NIH-NINDS	Network Cooperation In The Hippocampus In Vivo	\$331,745	Continuation
Gyorgy Buzsaki	CMBN	NSF	Collaborative Research: Effects of Non-Uniform Extracellular Potential...	\$80,342	Continuation
Ann Cali	FASN-Biology	Albert Einstein College of Med.	New Opportunistic Infections In AIDS: Microsporidia	\$105,386	Renewal
Ronald Clarke	SCJ	Alarm Ind. Res. & Ed. Fdn	The Deterrent Effect Of Home Burglar Alarm Systems On Crime...	\$4,500	Supplement
Mauricio Delgado	FASN-Psychology	NIH-NIDA	The Influence Of Emotion Egalition In The Neural Systems Of Reward...	\$231,750	New
Donita Devance	FASN-Cornwall	Schumann Fund for NJ	Family Services Inventory	\$10,500	New
Geri Dickson	Nursing	Various Non Profits	Workforce Development Issues Through A Statewide Coalition	\$11,000	New
Mark Feighn	FASN-Mathematics	NSF	Research In Geometric Group Theory	\$92,111	Continuation
Linda Flynn	Nursing	Robert Wood Johnson Fdn	A Multifaceted Approach To Reduce Medication Errors	\$308,254	New
Wilma Friedman	FASN-Biology	NIH-NIMH	A Genetic Approach To Study The P75 Neurotrophin Receptor	\$49,832	Continuation
Elena Galoppini	FASN-Chemistry	Department of Energy	Linkers For Semiconductor Nanoparticle Sensilization...	\$130,000	Continuation
Alexander Gates	FASN-Earth&Env Sc	NSF	Graduate Teaching Fellows Newark Public Schools...	\$387,422	Continuation
Alexander Gates	FASN-Earth&Env Sc	NSF	Highlands To Piedmont Newark, New Jersey Geoscience Scholars Alliance	\$691,599	New
Mark Gluck	CMBN	NIH-NIA	Early Detection Of Alzheimer's. Interdisciplinary And Intern. Collaboration	\$25,000	New
Erica Grant	FASN-Dean's Office	CUNY Research Foundation	Dissemination Of Self-Regulated Learning Model To Improve Student Perf...	\$8,276	New
Kent Harber	FASN-Psychology	Spencer Foundation	Determining the Case and the Extent of the positive Feedback Bias	\$184,250	New
Kenneth D Harris	CMBN	NIH-NIMH	Information Processing And Neuronal Coordination In Neocortex	\$405,312	Continuation
Alexander Hinton	FASN-Sociology	US Institute of Peace	Justice, Peace, Reconciliation In Cambodia	\$49,960	New
Mark Holzer	School of Pub Admin	SNJ-NJ Meadowlands Com.	2006 Comprehensive Action Plan	\$80,000	New
Brenda Hopper	RBS-SBDC	Verizon	Success Awards	\$5,000	Renewal
Brenda Hopper	RBS-SBDC	Various	2007 Procurement Conference	\$21,075	New
Frieder Jaekle	FASN-Chemistry	NSF	Career: Boron Containing Polymeric Lewis Acids ...	\$46,572	Supplement
Charalampos Kalodimos	FASN-Chemistry	NSF	Structural And Dynamic Studies Of The Allosteric Activation...	\$160,000	Continuation
George Kelling	SCJ	SNJ-Governor's office	Operation Cease Fire-Police Institute	\$750,000	Renewal
George Kelling	SCJ	SNJ-DLPS	Commission On Camden Public Security	\$13,559	Supplement
Haesun Kim	FASN-Biology	SNJ-Comm. on Brain Injury Res	Effect Of Diffused Axonal Injury On Dendrite And Myelin	\$299,999	New
Edward Kirby	FASN-Biology	SNJ-NJ Meadowlands Comm.	Wetlands And Water Quality Assessment	\$28,500	Supplement
Jessica Kitson	Law School	SNJ-Office of Victim Advocacy	Domestic Violence Advocacy Project	\$75,000	Renewal
Bart Krekelberg	CMBN	International Human Frontier...	Fellowship For Tamara Watson	\$133,500	New
Bart Krekelberg	CMBN	NIH-NEI	Eye Movement And Visual Perception	\$308,916	New
Lynn Mullins	Dana Library	Healthcare Foundation	"Born At Beth" Book Signing Event	\$3,000	New
Daniel E Murnick	FASN-Physics	NSF	Development And Field Validation Of Innovative Instrumentation...	\$222,789	Continuation
Wendy M Nehring	Nursing	HRSA-BHP-NUR	Advanced Education Nursing	\$196,213	Continuation
d.t. oglivie	RBS/Org. Mngment	Tyco, International Inc.	Scholars Training And Enrichment Program	\$58,000	New
Denis Paré	CMBN	NIH-NIMH	Amygdala And Prefrontal Control Of The Rhinal Cortices	\$292,909	Continuation
Denis Paré	CMBN	NIH-NIMH	Fellowship For Elizabeth Bauer	\$50,428	Continuation
Helen Paxton	Communications	Arts Council of the Essex Area	Music At Rutgers-Newark	\$2,952	Renewal
Clement Price	FASN-History	Geraldine R. Dodge Foundation	Geraldine R. Dodge Post-Doctoral Fellowship	\$60,000	Renewal
Kelly Robinson	FASN-Cornwall	Lincoln Park/Coast Cult. District	Performance Indicator Development And Assessment	\$15,000	New
Martin Schaden	FASN-Physics	NSF	The Semi Classical Approximation Applied To Casimir Effects	\$45,000	Continuation
Ralph Siegel	CMBN	Univ of California, Berkeley	Fluorescent Protein Sensors Of Neural Activity	\$75,155	Continuation
Lee Slater	FASN-Earth&Env Sc	NSF	A Hydrogeophysical Study Of Northern Raised Bogs	\$25,000	Continuation
Lee Slater	FASN-Earth&Env Sc	NSF	Geophysical Eval. Of Carbon Gases In Peatlands	\$34,372	Continuation
Mary Stadelman	Athletics and Rec.	National Coll. Athletics Accoc.	Athletic Marketing and Administration Intern	\$19,110	New
Paula Tallal	CMBN	Univ of California, San Diego	The Temporal Dynamics Of Learning	\$26,349	New
Deborah Walker-McCall	Nursing	DHHS-PHS-HRSA	Scholarships for Disadvantaged Students	\$77,891	Renewal
Judith Weis	FASN-Biology	SNJ-Dept of Environ. Protection	Soil Metals And Plant Communities At Liberty State Park	\$23,265	New
Junius Williams	FASN-Education	Schumann Fund for NJ	Abbott Leadership Institute	\$50,000	Renewal
Junius Williams	FASN-Education	Geraldine R. Dodge Fdn	Abbott Leadership Institute	\$10,000	Renewal
Junius Williams	FASN-Education	Public Interest Projects	The Abbott Leadership Institute	\$34,600	New
Junius Williams	FASN-Education	Victoria Foundation	Abbott Leadership Institute	\$40,000	Renewal
Laszlo Zaborszky	CMBN	NIH-NINDS	Afferent Regulation Of Cholinergic Forebrain Neurons	\$349,217	Continuation

In Context—The Bigger Picture

Extracted from Rutgers Funded Research and Sponsored Programs FY 2006 Annual Report

External Funding for Research Research Grants & Contracts FY 1997-FY 2006

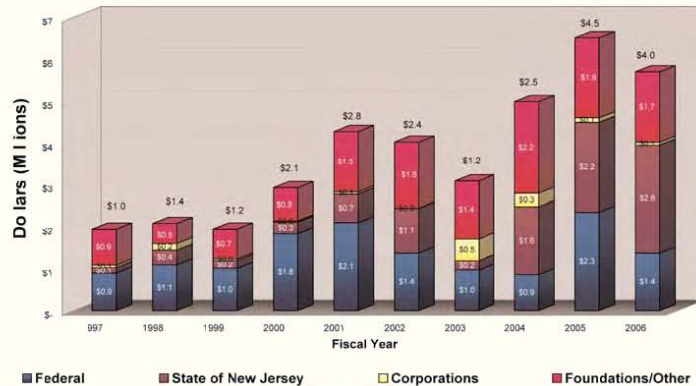
Externally sponsored research, grants and contracts totaled \$298.0 million in FY 2006 compared to \$295.5 million in FY 2005. This represents an overall 0.8 % increase. The charts below show an increase in grants from the State of New Jersey over all campuses for FY 2006. Total funding has climbed steadily after a decline in FY 1998, suffering a slight setback in FY 2004.



Overall:

There was a 37.1% overall increase in State of New Jersey grants from FY 2005 to FY 2006.

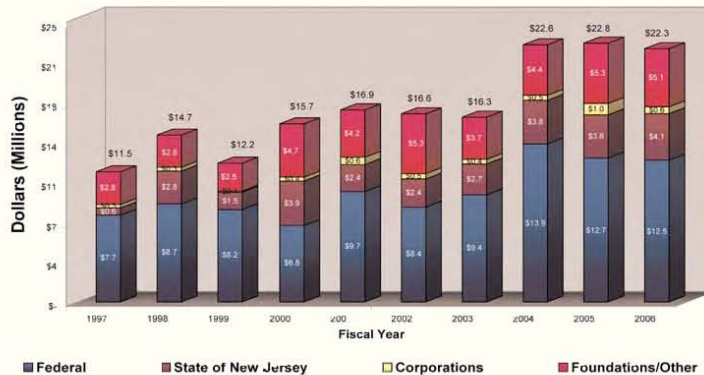
The \$60.4M received from the State accounts for 20.3% of the total funding that all Rutgers campuses received during FY 2006.



Camden:

There was a 19.6% increase in State of New Jersey grants from FY 2005 to FY 2006.

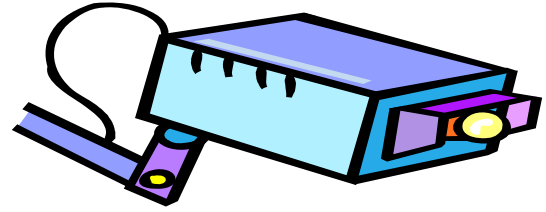
The \$2.6M received from the State accounts for 45.4% of the total funding Camden campus received during FY 2006.



Newark:

There was a 7.7% increase in State of New Jersey grants from FY 2005 to FY 2006.

The \$4.1M received from the State accounts for 18.4% of the total funding Newark campus received during FY 2006.



FY 07 PROPOSAL SNAPSHOT



Proposal Endorsement Forms Processed -----261

New -----177
 Renewals-----37
 Continuations-----41
 Supplements-----6



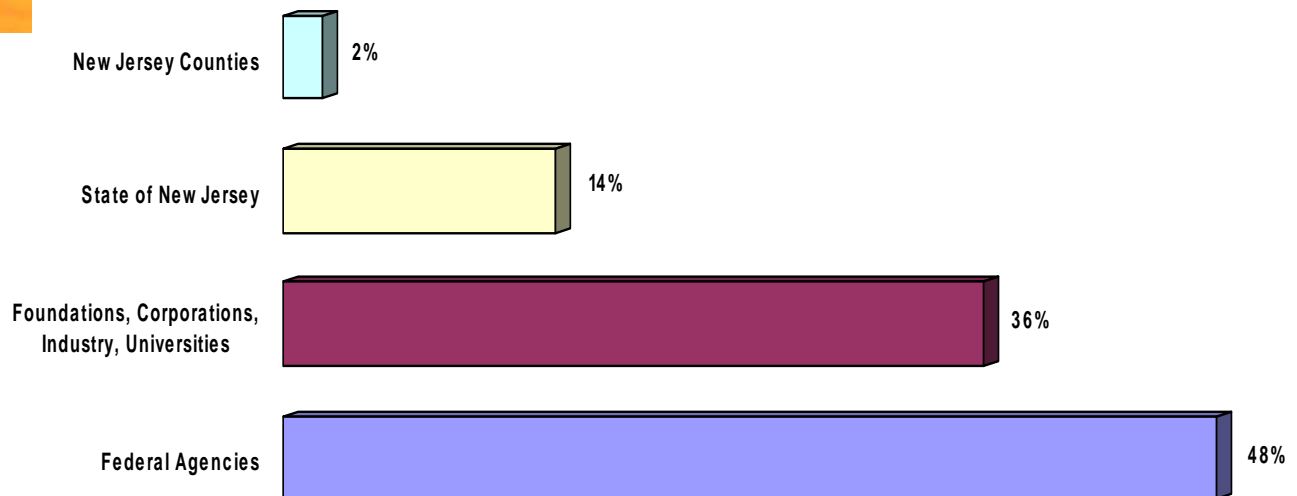
Most Prolific Proposal Writers

Bart Krekelberg, CMBN - 7
Ralph Siegel, CMBN - 7
Nihal Altan-Bonnet, Biological Sciences - 5
Haesun Kim, Biological Sciences - 5
Lee Slater, Earth and Env. Sciences - 5
Robert Atkins, Col. Of Nursing - 4
Kyle Farmbry, School of Public Admin. - 4
Mark Gluck, CMBN - 4
Huixin He, Chemistry - 4
Catherine Myers, CMBN/Psychology - 4

Brenda Hopper, Small Business Development Center, RBS - 23
Clement Price, Institute on Ethnicity, Culture and the Modern Experience - 11
Junius Williams, Abbott Leadership Institute - 8



Proposal Distribution by Funding Source

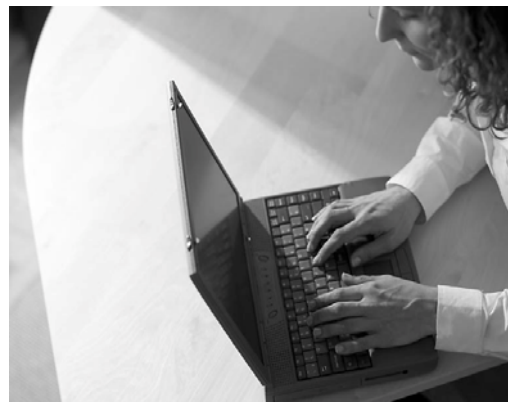


Notable total award amounts from local foundations and industry in FY07

Prudential ----- \$435,000

Robert Wood Johnson Foundation ----- \$763,527

New Jersey State Bar Foundation ----- \$304,000



Training Opportunities (Coming in Fall)

GRANTS.GOV

Two hands-on sessions have been scheduled for the fall semester. The training will provide a hands on experience with using **grants.gov** for proposal submission. We will share all the tips we know and lessons learned from previous submissions. Emphasis is on the NIH requirements but much of the information will also apply to other agencies.

10/3/07 2:30 - 3:50
Hill Hall 124
11/28/07 2:30 - 3:50
Hill Hall 124

FASTLANE

Hands-on training on using the National Science Foundation **Fastlane** system.

10/29/07 11:30-12:50
Hill Hall 124

Also Coming this Fall
(Dates and times for all sessions to be determined)

SUBCONTRACTING ISSUES

Maryellen O'Brien, Assistant Director, Office of Research and Sponsored Programs in New Brunswick will lead a workshop on

subcontract preparation and monitoring.

INSIDE SECRETS TO GETTING YOUR PROPOSAL FUNDED – WORKING LUNCH/PANEL DISCUSSION

A panel of faculty who have been successful in obtaining grants will present on their experiences in proposal writing, including their insights, obstacles, frustrations, strategies etc. The panel includes:

Dr. Lee Slater – Earth and Environmental Sciences,

FASN, Dr. Charalampos Kalodimos – Chemistry, **FASN, Dr. Richard Mendelsohn** – Chemistry, **FASN, Dr. Bart Krekelberg** – CMBN, **Dr. Wilma Friedman** – Biology, FASN

SPIN (Sponsored Programs Information Network)

Camie Morrison, Director of Sponsored Programs Office, Rutgers-Camden will share her expertise on getting the most out of the funding searches using SPIN.

<http://researchoffice.newark.rutgers.edu/>

RUTGERS
NEWARK

Research Office
Blumenthal Hall, Suite 206
249 University Ave
Newark, NJ 07102
Phone: 973-353-1537
Fax: 973-353-1536

Contacts:

Jacqueline Cornelius, Director
9973-353-1538, jcorneli@andromeda.rutgers.edu

Kasia Proszowski, Grants Specialist
973-353-1539, prosz@andromeda.rutgers.edu

Malika Bennett, Assistant
973-353-1537, mbennet@andromeda.rutgers.edu